

To Students -

Below I have listed a few of the items which will be of interest to you as you move to our new Ferndale High School.

John J. Houghton
John J. Houghton, Principal

- SCHOOL DAY** Roll is taken at 8:45 a.m. and dismissal is at 3:22 p.m. This applies to all students except those on the cooperative occupational training program. "Zero hour" begins at 8:00 a.m.
- STUDENT PARKING** Student parking permits and assigned parking spaces are issued by the assistant principal to students (a) who live a great distance from school, or (b) whose out-of-school job requires a car. Students must have their cars in their assigned spaces before their classes begin. Under no circumstances may students return to the parking area until the end of the school day.
- CAFETERIA** Every student - whether he brings his lunch or buys all or part of it in the cafeteria - must use a tray, returning it to the proper place when lunch is finished.
- SMOKING** Smoking on school property is prohibited.
- ABSENCES** When a student is going to be absent, a call should be made to the Counselling Center (Lincoln 8-8600) in advance of such absence. Never be absent without notifying the school.
- REPORT CARDS & TEACHER CONFERENCES** Report cards are distributed on Wednesday of these weeks of the school year: 8th, 14th, 21st, 28th, 34th, and 40th. To arrange a conference with a teacher call the Principal's Office (Lincoln 8-8600).
- COUNSELLING SERVICES** For assistance with any present concerns and problems see your counsellor. Counsellors and teachers also have helpful suggestions on such things as vocations, education beyond high school, and scholarships.
- LIBRARY** Our fine library has much information you need for class assignments. Consult with the librarian.
- STUDENT COUNCIL** This important leadership organization represents the student point of view in considering many school matters. It is also a most effective school service group.
- EXTRA-CURRICULAR ACTIVITIES** There are extra-curricular activities in all departments. Students with interests beyond the subject-matter of the classroom should ask their teachers for more information.
- ACCREDITATION** Ever since 1921 our high school has been continuously approved by the North Central Association of Colleges and Secondary Schools.

0 hour Corridor E

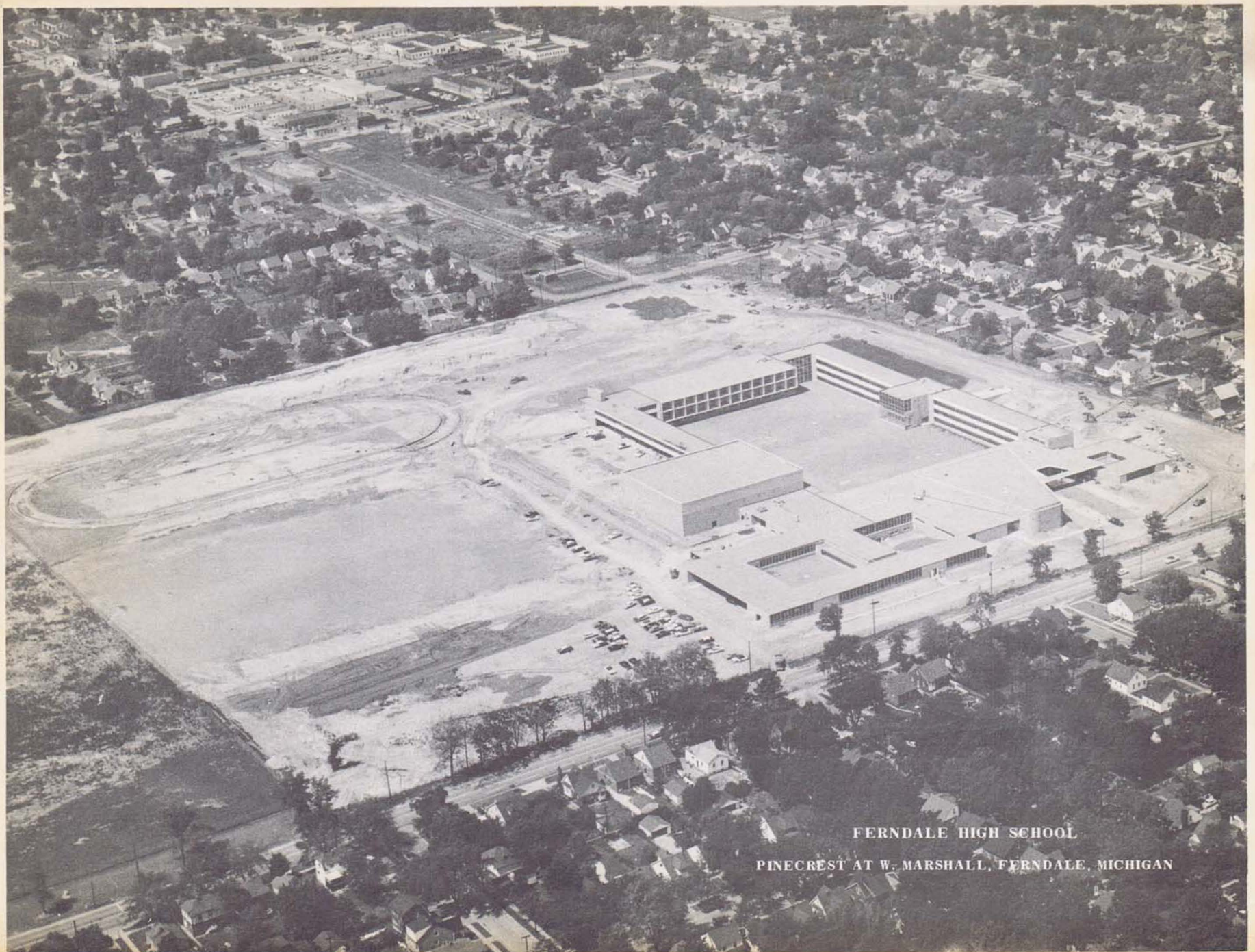
SCHEDULE OF *Bob Evans*
ADDRESS *250 E. Breckenridge* LOCKER NUMBER *690*

PERIOD	TIME	TEACHER	ROOM NO.	SUBJECT
UR	8:45 to 8:57	<i>McCarthy</i>	<i>221</i>	<i>Unit Room</i>
1	9:02 to 9:57	<i>Cannicci</i>	<i>221</i>	<i>Band</i>
2	10:02 to 10:57	<i>Carl</i>	<i>112</i>	<i>Am. His.</i>
3	11:02 to 11:57	<i>Logas</i>	<i>103</i>	<i>Chemistry</i>
4*	12:57 to 1:22	<i>Meister</i>	<i>209</i>	<i>Geometry</i>
5	1:27 to 2:22	<i>Economias</i> <i>Study</i>	<i>5H</i>	<i>Study</i>
6	2:27 to 3:22	<i>Cummings</i> <i>Am. Lit.</i>	<i>323</i>	<i>Am. Lit.</i>

*Lunch Period as Checked

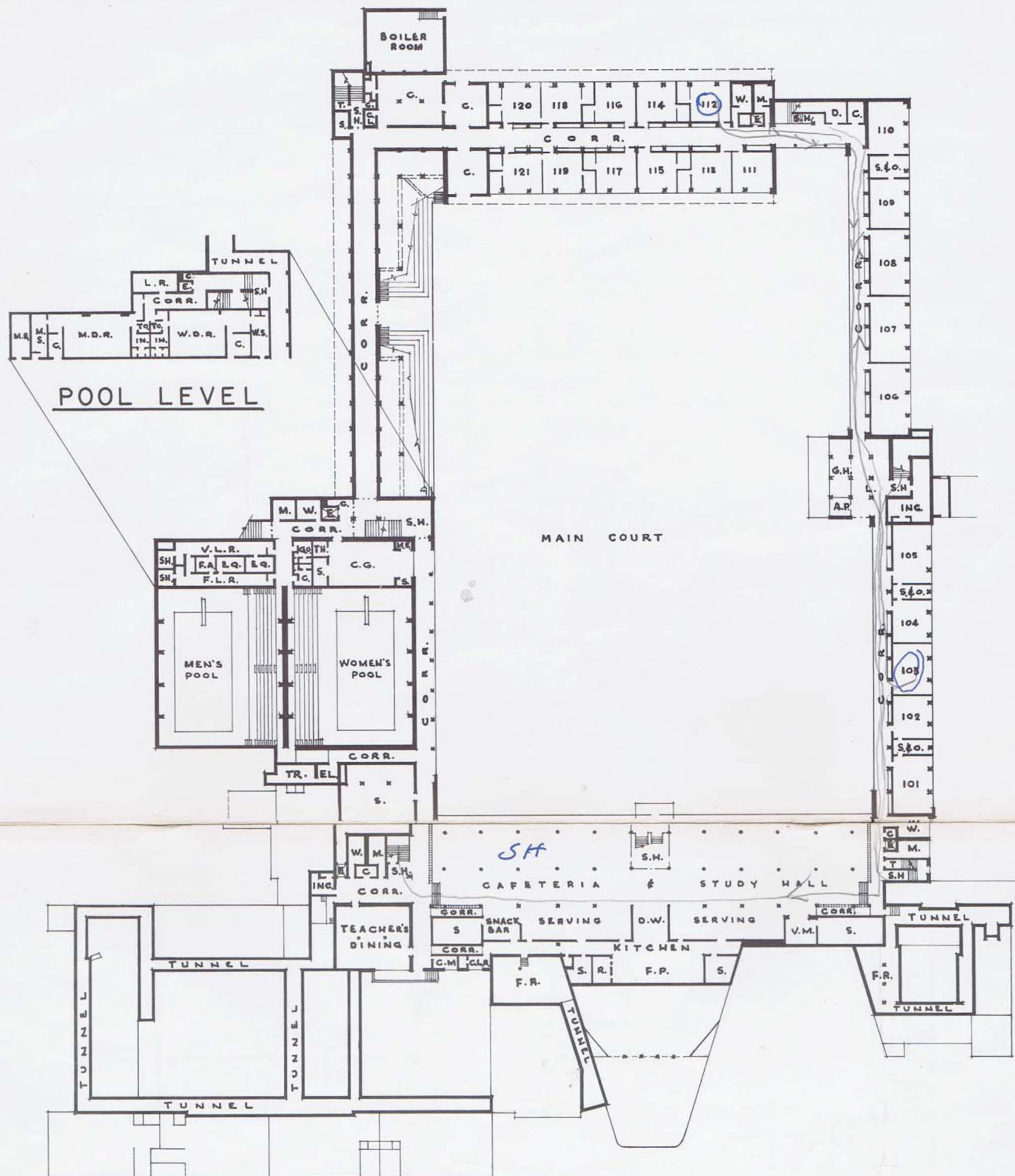
4-1	11:57 - 12:27	
<i>4-2</i>	12:17 - 12:47	<input checked="" type="checkbox"/>
4-3	12:37 - 1:07	
4-4	12:57 - 1:22	

Must use a tray



FERNDALE HIGH SCHOOL
PINECREST AT W. MARSHALL, FERNDALE, MICHIGAN

FERNDALE HIGH SCHOOL

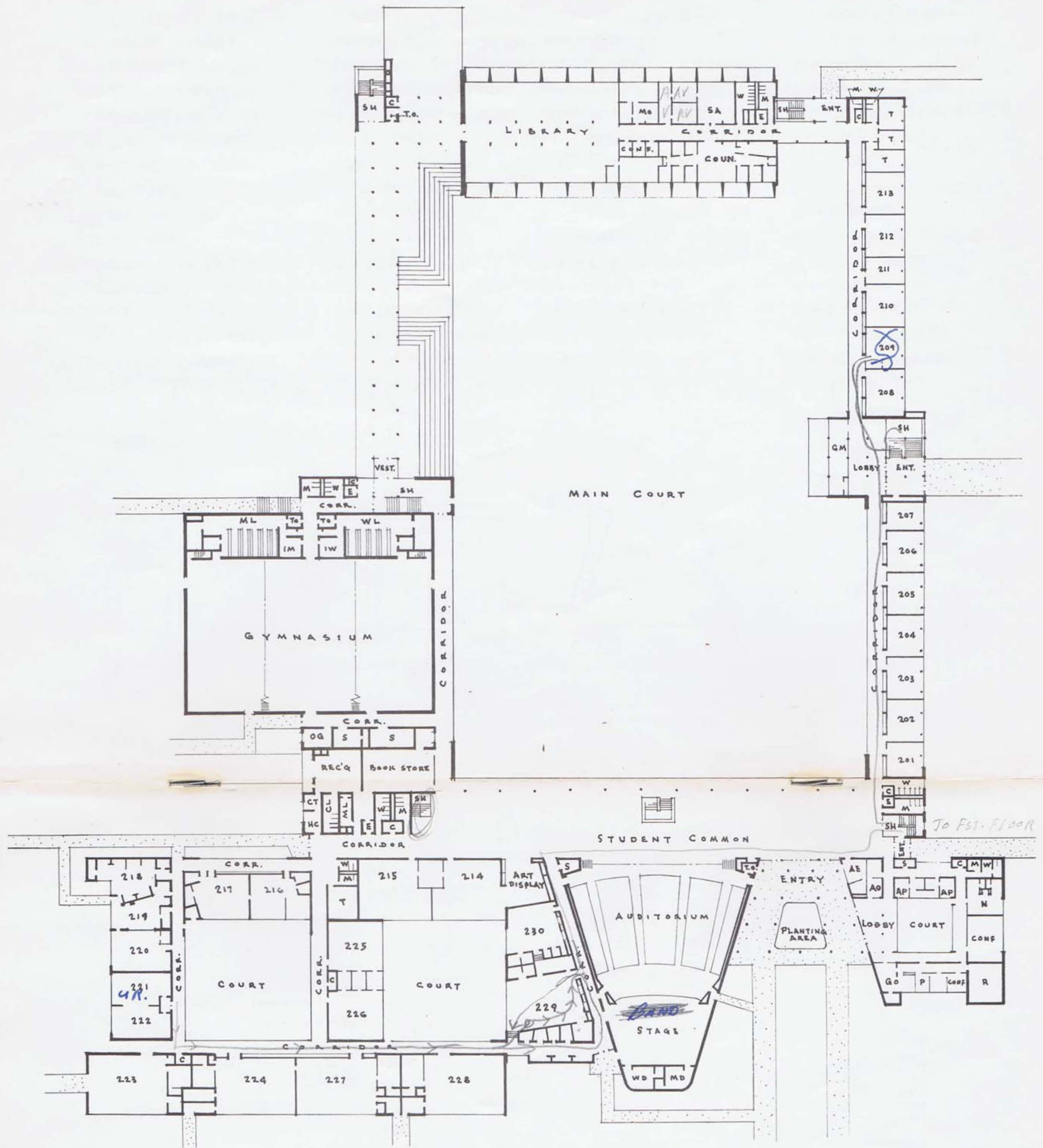


LOWER LEVEL FLOOR PLAN

101-PHYSICS LABORATORY	117-SOCIAL STUDIES	E.-ELEVATOR	M.S.-MEN'S SHOWER
102-SCIENCE LECTURE	118-SOCIAL STUDIES	EL.—ELECTRICAL	R.—REFRIGERATOR
103-SCIENCE LECTURE	119-SOCIAL STUDIES	EQ.—EQUIPMENT	S.—STORAGE
104-SCIENCE LECTURE	120-SOCIAL STUDIES	F.A.—FIRST AID	SH—SHOWER
105-CHEMISTRY LABORATORY	121-SOCIAL STUDIES	F.R.—FAN ROOM	S.H.—STAIRHALL
106-BIOLOGY	A.P.-ANIMAL PEN	F.L.—FRESHMAN LOCKER	S.O.—STORAGE & OFFICE
107-BIOLOGY	C.—CUSTODIAN	F.P.—FOOD PREPARATION	T.—TUNNEL
108-BIOLOGY	C.L.R.—CUSTODIAN LOCKER	G.H.—GREENHOUSE	TH.—THERAPIST
109-GENERAL SCIENCE	CORR.—CORRIDOR	G.O.—GAME OFFICIALS	TO.—TOWELS
110-GENERAL SCIENCE	CO.—COACH	INC.—INCINERATOR	TR.—TRANSFORMER
111-SPECIAL EDUCATION	C.G.—CORRECTIVE GYM.	L.—LOBBY	V.M.—VENDING MACHINES
112-SOCIAL STUDIES	C.L.—CUSTODIAN LOCKER	L.R.—LAUNDRY ROOM	VL.—VARSITY LOCKER
113-SPECIAL EDUCATION	C.L.R.—CAFETERIA LOCKER	M.—MEN	W.—WOMEN
114-SOCIAL STUDIES	C.M.—CAFETERIA MANAGER	M.D.—MEN'S DRESSING.	W.D.—WOMEN'S DRESSING
115-SOCIAL STUDIES	D.—DARKROOM	M.E.—MECHANICAL EQUIPMENT	W.S.—WOMEN'S SHOWERS
116-SOCIAL STUDIES	D.W.—DISHWASHING		

SHEET NO. I.

FERNDALE HIGH SCHOOL

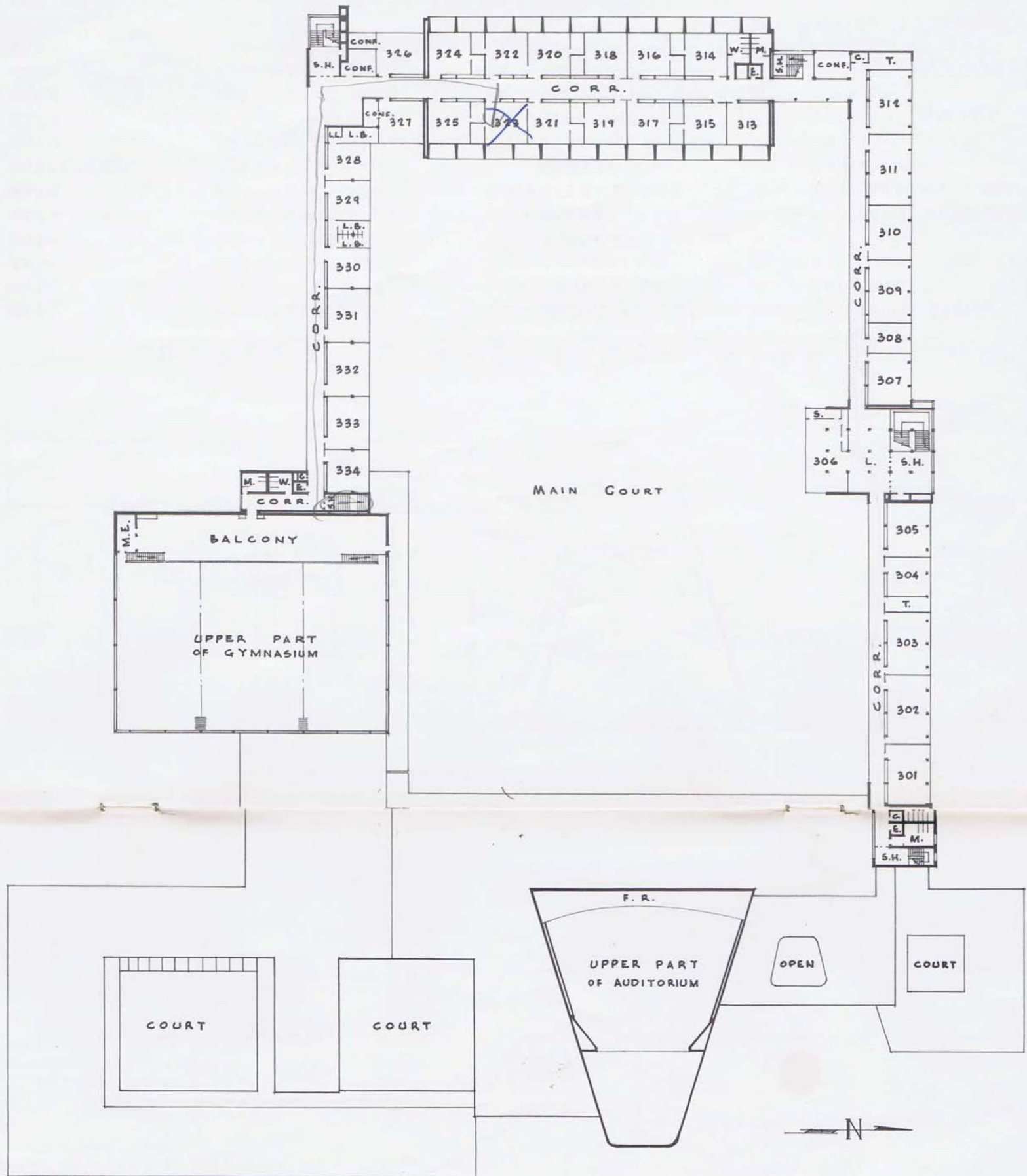


STREET LEVEL FLOOR PLAN

201 - MATH	218 - COOKING	G.L. - CUSTODIAN LOCKER	O.G. - GYMNASIUM OFFICE
202 - MATH	219 - HOME ARTS	COUN. - COUNSELORS	P. - PRINCIPAL
203 - MATH	220 - CHILD STUDY	CONF. - CONFERENCE	R. - RECORDS
204 - MATH	221 - SEWING	C.T. - CUSTODIAN TOOL RM	S. - STORAGE
205 - MATH	222 - SEWING	E. - ELEVATOR	S.A. - STUDENT ACTIVITIES
206 - MATH	223 - AUTO SHOP	G.M. - GREENHOUSE	S.H. - STAIRHALL
207 - CONFERENCE	224 - WOOD SHOP	MEZZANINE	T. - TEACHERS
208 - MATH	225 - DRAFTING	G.O. - GENERAL OFFICE	TO. - TOWELS
209 - MATH	226 - DRAFTING	H.C. - HEAD CUSTODIAN	T.O. - TICKET OFFICE
210 - MATH	227 - METAL SHOP	I.M. - INSTRUCTOR, MEN	W. - WOMEN
211 - MATH	228 - MACHINE SHOP	I.W. - INSTRUCTOR, WOMEN	W.D. - WOMEN'S DRESSING
212 - MATH	229 - INSTRUMENTAL	L.M. - LEARNING MATERIALS	W.L. - WOMEN'S LOCKER
213 - MATH	230 - VOCAL	M. - MEN	W.T. - WOMEN TEACHERS
214 - APPLIED ARTS	A.E. - ADULT EDUCATION	MA. - MATRON'S LOCKER	
215 - PRINTING	A.O. - AUXILIARY OFFICE	M.D. - MEN'S DRESSING	
216 - FINE ARTS & CERAMICS	A.P. - ASS'T. PRINCIPAL	M.L. - MEN'S LOCKER	
217 - CRAFTS & JEWELRY	A.V. - AUDIO-VISUAL	M.T. - MEN TEACHERS	
	C. - CUSTODIAN	N. - NURSE	

SHEET NO. 2

FERNDALE HIGH SCHOOL



UPPER LEVEL FLOOR PLAN & LOWER LEVEL ROOF PLAN

301 — TYPING	314 — ENGLISH	327 — SPEECH	L. — LOBBY
302 — OFFICE PRACTICE	315 — ENGLISH	328 — LANGUAGE	L.B. — LIST. BOOTHS
303 — BOOK KEEPING	316 — ENGLISH	329 — LANGUAGE	LL. — LANGUAGE LIBRARY
304 — COMMERCIAL	317 — ENGLISH	330 — LANGUAGE	M. — MEN
305 — TYPING	318 — ENGLISH	331 — LANGUAGE	M.E. — MECHANICAL
306 — CO-OP RETAIL	319 — ENGLISH	332 — SPECIAL EDUCATION	S.H. — STAIRHALL
307 — SHORTHAND	320 — ENGLISH	333 — JOURNALISM	T. — TEACHERS
308 — COMMERCIAL	321 — ENGLISH	334 — JOURNALISM	S. — STORAGE
309 — TYPING	322 — ENGLISH	CONF.-CONFERENCE	W. — WOMEN
310 — SHORTHAND	323 — ENGLISH	CORR.-CORRIDOR	
311 — TYPING	324 — ENGLISH	G. — CUSTODIAN	
312 — TYPING	325 — ENGLISH	E. — ELEVATOR	
313 — SPECIAL EDUCATION	326 — DRAMA	F.R.—FAN ROOM	

SHEET NO. 3